

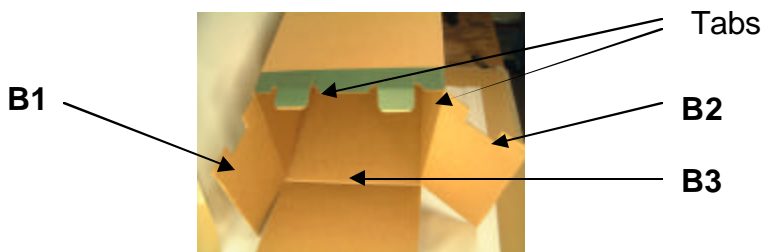


Assembling Your Technotrash Can

Assembling your Technotrash Can™ should only take you a minute or two. To ensure proper strength and security for the return trip there are flaps (as shown below) on both the both and the top. Bottom flaps are identified as B1, B2, and B3 and the Top flaps are referred to as T1, T2, T3, and T4.

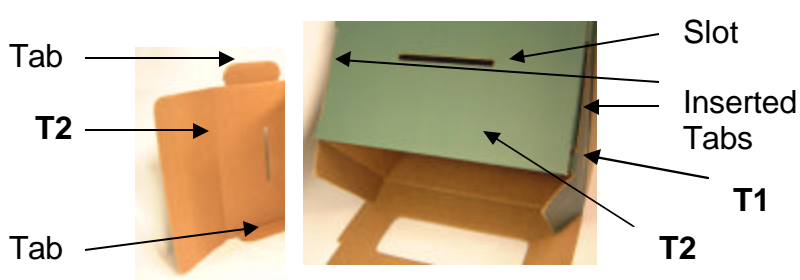
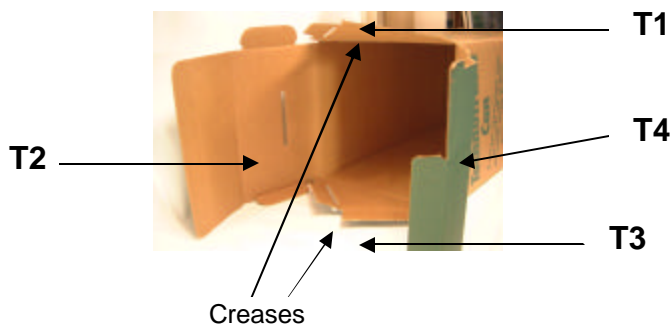
Step 1. Turn the Technotrash Can upside down folding the two identical flaps (B1 & B2) towards each other.

Step 2. Fold the large flap (B3) over and tuck it in. Insert the two Tabs directly into the slots in flap B3.



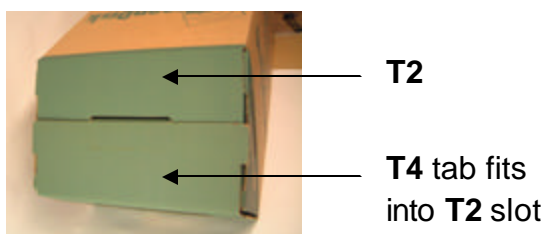
Step 3. Fold the two identical triangular flaps (T1 & T3) in towards each other. For easy folding bend the scored creases.

Step 4. Fold over the large flap (T2) with the small slot. Insert the 2 tabs into the side flaps, T1 & T3, respectively.



Step 5. Take flap T4 and insert the tab at the end of T4 into the slot on T2.

Hint. Make sure the end of the large flap (T2) is fully folded before tucking in the tabs. This will ensure T4 fits properly.



The Completed GreenDisk Technotrash Can

